

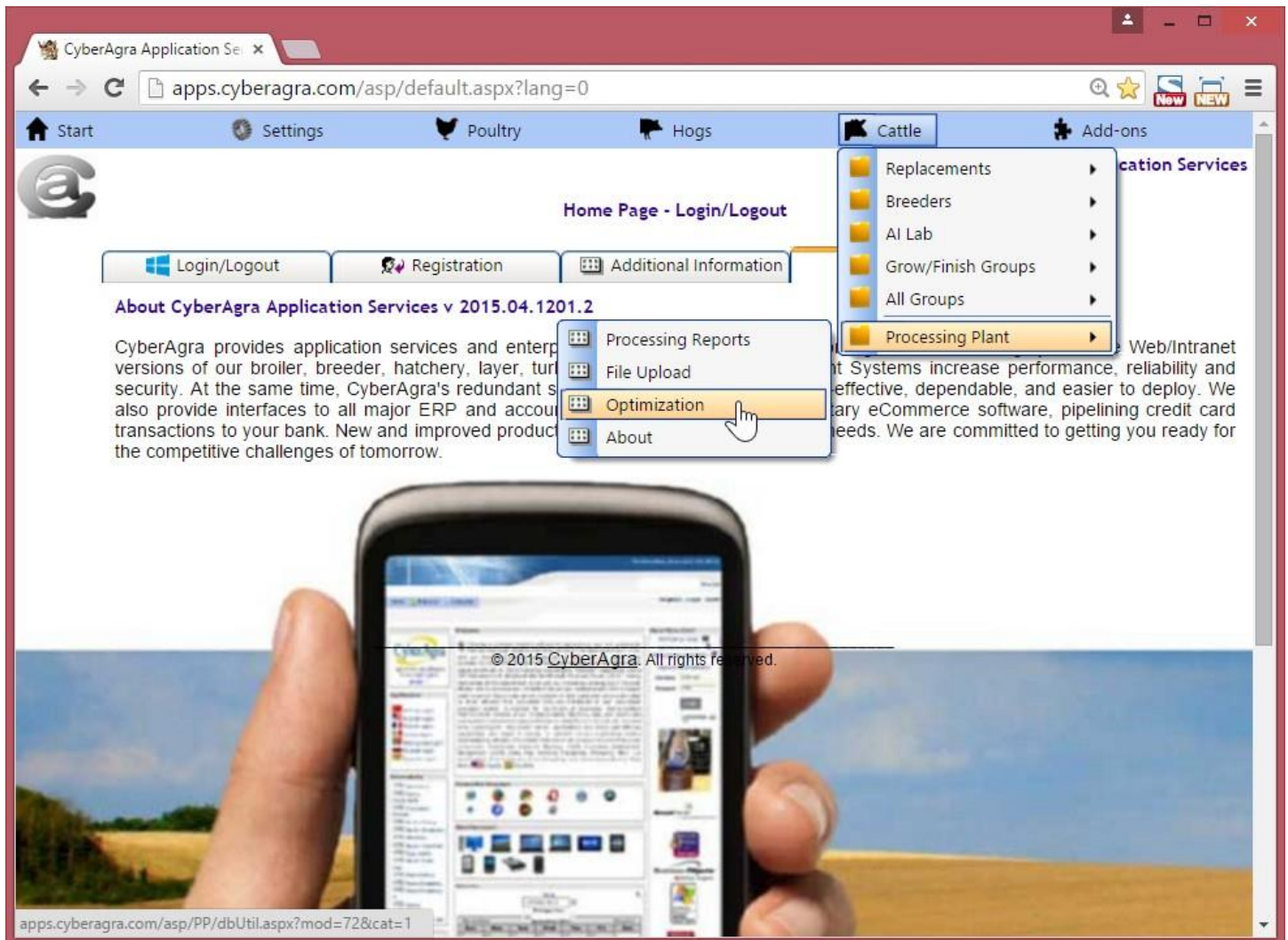
PRESS RELEASES

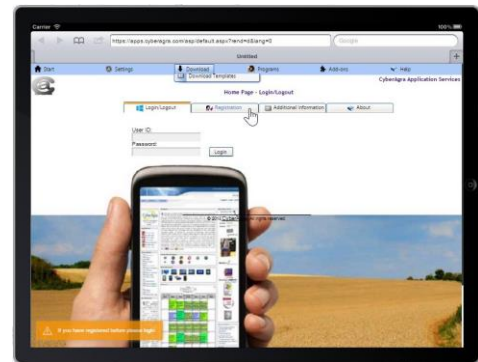
CyberAgra Cattle Enterprise™

Midlothian, VA, USA: For immediate release, December 28, 2015 - CyberAgra, a leading software provider for agriculture, today unveiled a new module called CyberAgra Cattle Enterprise™, which is built on the core CyberAgra Application Services™ version 16, the latest major release of our fully integrated enterprise recordkeeping system. More information on the web at:

<http://www.cyberagra.com/Products/Online-Private-Cloud-Based-Software/Cattle-Management-Recordkeeping>

This new module helps customer success by including production and accounting of Cattle Replacement Stock, Breeding, Grow/Finish, Processing Plant, and Feedmill. Existing features include adaptive user interface and universal support for devices from smartphones to servers in enterprise datacenters worldwide. These programming improvements go hand in hand with worldwide communications advances and acceptance of the internet as the next technical platform. Everyone is invited to test our newly designed version anonymously at www.cyberagra.com





Of course users will continue to benefit from the power of our backend cloud services - or private cloud installation - featuring redundancy for mission critical operations with theoretically unlimited number of animals, facilities, storage, and a number of other benefits. Moreover, market expansion due to customer satisfaction has allowed CyberAgra to test our applications on the field with practical conditions in a wide range of situations from 1 to 1000 simultaneous users, up to 900 farms, and producing more than 3000 reports per day.. CyberAgra's applications as well as Microsoft Dynamics ERP line of products leverage the popularity, feature advantages (cut and paste, formula calculations, etc.), and user-friendliness of the Microsoft Office line of products for input-output, which allows new users to be trained in a shorter period of time.

About Us

CyberAgra provides modern software for agriculture. Our 4th generation modules have been steadily improving through the years starting in 1995 with our Windows® desktop versions and in 1997 with our client-server updates. During 2001 all user interfaces were redesigned as Web active server pages, and finally, in 2004 CyberAgra Application Services™ was ported to the .NET framework and officially verified for Microsoft Windows Server™. The applications are written in .aspx pages with code-behind using Microsoft .NET Framework. These pages are interpreted and run 100% on the server side which means that there is no need for any individual user installation. Users connect from any kind of computer (Windows®, Apple®, Unix®) at the company's Intranet or Internet with no more than a browser. The system uses Activex Data Objects (ADO) for database connectivity. This "thin" model was specially designed to connect thousands of simultaneous users at speeds ranging from 100-10 Mb/s LAN to any regular modem speed. Dynamic reports can be generated at your office or while traveling, anytime you wish. Cloned redundant multiprocessor servers ensure mission critical applications are always online, even in the event of a sudden hardware crash. The system is



secured via Internet transaction standards of SSL encryption. Our local onsite network and server configuration expertise allows for a complete standalone setup with client control of data, hardware and software. However, new software versions are easily obtained and applied to one or two servers, thereby effectively upgrading hundreds of internal users simultaneously.

What makes our software unique?

- Most modern system in the industry.
- No need for any installation whatsoever to use the system.
- Connect from anywhere and with any hardware: PCs, Laptops, iPads, Notebooks, Netbooks, Tablets, iPhones, Smartphones, BlackBerrys.
- Compatible with all internet browsers: Microsoft IE, Mozilla Firefox, Google Chrome, Opera, Apple Safari.
- Compatible with all operating systems: Windows, Symbian, Mac OS X, iOS, Linux, BlackBerry OS.
- Officially certified by Microsoft Corporation.
- Active Directory handled Roaming Profiles and Single Sign On to keep all your passwords unified. Log in to all your applications at once.
- Optimized database access using fewer network resources allows for simultaneous connection of several thousand users.
- Numeric or graphical report output to txt, pdf, htm, xls, csv, rtf, and doc formats.
- Easy centralized upgrade for maximum stability.
- Highly scalable redundant servers used for mission critical uptime.
- Cloud application services or private cloud installation for enhanced security.

Partnerships

1. Thawte, a VeriSign Company, Durbanville, SA. Since August, 2002. Thawte's Partner Channel offers a single, integrated partnering framework that recognizes partner expertise.
2. Microsoft Corporation, WA, USA. Since March 2004. Microsoft Competencies are designed to help differentiate a partner's capabilities with specific Microsoft technologies to customers looking for a particular type of solution.
3. Business Objects, CA (A SAP Company). Since April 2005. Partnership with Business Objects in the areas of Application Development, Back-Office Applications Integration, CRM (Customer Relationship Management), Data Warehousing, ERP (Enterprise Resource Planning), and eBusiness.

THANK YOU FOR YOUR BUSINESS!

